

xylem



GxP compliant mapping

OUR SERVICE OFFER FOR QUALIFIED TEMPERATURE AND HUMIDITY MAPPING

-ebro-
a xylem brand

Stay on top of things

with our mapping service!

Comprehensive preliminary talk
Provision of calibrated ebro[®] rental loggers
Competent evaluation of the measurement results
Detailed final discussion



Our Service offer supports you in the planning and implementation of your mapping study. We will go through the following steps with you

1. Creating the mapping plan

Together with you, we create a mapping plan that can be perfectly adapted to the conditions in your company thanks to our variable templates.



Benefit from our expertise

GxP compliant mapping of:

- Production rooms
- Refridgerators and freezers
- GxP-Warehouses

Contact us directly or make an appointment.
Tel +49 841 954780

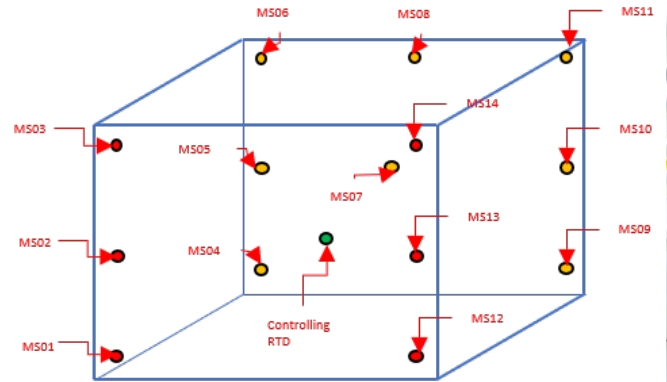


Further information about the **GMP compliant Mapping of storage rooms** can be found on our website:

www.ebro.com/en/news

2. Risk based distribution of the measurement points

The definition of the measuring points is based on the specifications of the **WHO**. In addition, we will identify potentially critical risk points with you during an on-site inspection and record them in the measuring point overview. So no risk of your temperature distribution is overlooked.



Spatial distribution of the measuring points

3. Selecting the correct data loggers

For the duration of the measurements, we provide you with our high-precision temperature and humidity data loggers with fast response times. This ensures high accuracy over the relevant measuring range, and even small fluctuations can be detected. All loggers used measure stably over the entire mapping period and are calibrated traceably to a national standard.

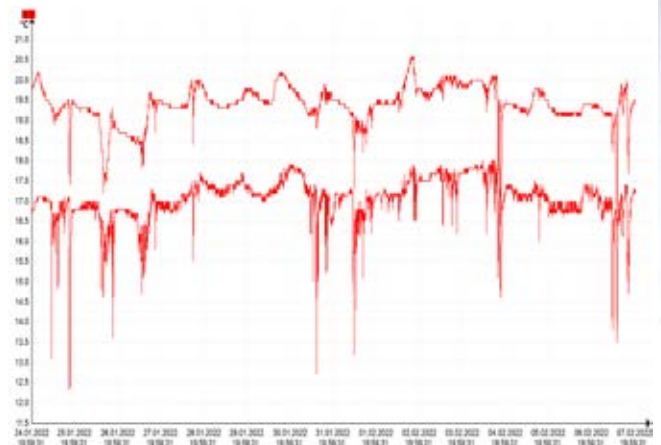
4. Evaluating the mapping study

Thanks to our user-friendly and **21 CFR part 11 compliant software**, a single view of the results of all loggers and an accurate and detailed evaluation of the individual measuring points is possible. The following data can be clearly displayed in this way:

- Raw data, including time and date
- Calculated values such as maximum, mean and Minimum values and the maximum fluctuation
- Temperature and relative humidity
- Graphic representation of all curves
- Calibration data
- Instrument settings
- Time and date of the study

5. Creating a valid report

The report will be prepared by our **GMP and FDA experienced** colleagues and the results will be summarized in an comprehensible way. In doing so, the report provides an estimate for each measuring point as to whether there could be a possible risk for the product or whether areas of the warehouse should be modified or closed.



Graphical evaluation of the mapping study with the Winlog.pro software



A **successful mapping study** is not only a prerequisite for operating a GMP warehouse. It is essential for operators if knowledge about the temperature distribution within the warehouse or the cold rooms is to be gained and the performance of the air conditioning is to be assessed. Ultimately, the ideal locations for installing the routine monitoring sensors can be identified in this way. If you have any questions about this, please contact us directly.

Also read our **white paper** if you have further question on this topic!

You can order your copy free of charge at www.ebro.com/en/news

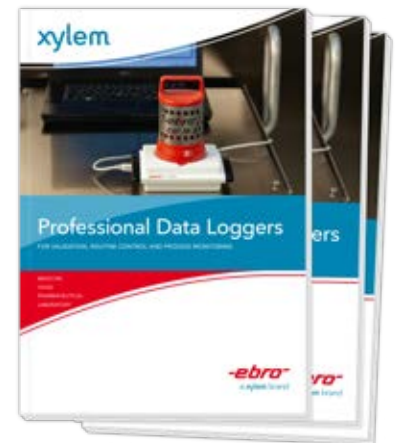
You can find catalogues on our website:



If you would like to receive digital catalogue copies please send your request via e-mail to ebro@xylem.com



Professional Measurement Technology (Art.Nr. 1347-0110)



Professional Data Logger (Art. Nr. 1347-0112)



Xylem Analytics Germany Sales GmbH & Co. KG, ebro
 Peringerstr. 10
 85055 Ingolstadt, Germany
 Tel +49 841 954780
 Fax +49 841 95478-80
ebro@xylem.com
www.ebro.com

ebro® is a registered trademark of Xylem Inc. or one of its subsidiaries.
 Technical changes reserved.
 © 2022 Xylem Analytics Germany Sales GmbH & Co. KG.

1347-0114 May 2022