



# Temperature Data Logger EBI 12

for food control during pasteurization, but also for monitoring, process and routine monitoring as well as temperature mapping...

## BLUE LINE

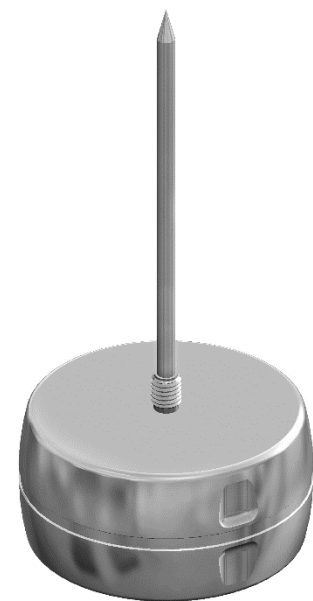
### EBI 12-T233

The EBI 12 data logger is used for temperature measurement in canned food, jars, beverage cans and much more.

- High-quality stainless-steel housing
- Axial design
- M5 thread for attachment to the probe
- Application range from -55 °C to 150 °C
- High temperature accuracy of up to  $\pm 0.1$  °C
- Version with one measuring channels
- Temperature sensor 3 mm, rigid

#### Technical Data:

Operating temperature	-55 °C ... +150 °C
Measurement range	-55 °C ... +150 °C
Accuracy	$\pm 0.5$ °C (-55 °C ... -40 °C) $\pm 0.2$ °C (-40 °C ... 0 °C) $\pm 0.1$ °C (0 °C ... +150 °C)
Resolution	0.01 °C
Data memory	27,840 measurements
Sensor	PT1000, Class A
Measurement interval	1 s ... 24 hours
Real-time data transmission	No
Storage temperature	-20 °C ... +70 °C
Measurement modes	<ul style="list-style-type: none"> <li>• endless measurement</li> <li>• Measure upon starttime</li> <li>• Start immediately until end of memory</li> <li>• Start- / Stop measurement</li> </ul>
Battery	Lithium, 3.6 V, User-replaceable
Dimensions	( $\varnothing$ x H) 48 mm x 24 mm
Weight	app. 90 g
Housing material	316 L stainless steel / PEEK
Protection class	IP68
Factory Calibration Certificate	-20 °C, 0 °C, +60 °C and +134 °C



#### Standards and Directives:

- (EC) 1935/2004  
Materials and articles which come into contact with food
- 2014/53/EU  
Radio Equipment Directive RED

Type	Description	Part No.
EBI 12-T233	L 150 mm	1340-6609